



F I N N E R T I

FINANCE ♦ DEVELOPMENT ♦ PROPERTY

**5 Pegler Square
London
SE3 9FW**



4 BED TOWNHOUSE READY TO MOVE IN SPRING 2026

Kidbrooke Village is located in one of London's most popular locations, the Royal Borough of Greenwich and comprises of four distinct neighbourhoods, integrated seamlessly into one community. These include: The Village Centre (Birch House, Centrum Court and Agora Court), Meridian Gate, Blackheath Quarter and City Point.

- Located in zone 3
- 4 bed townhouse
- 1515 sq ft
- On-site Kidbrooke station
- Only 16 minutes from London Bridge

£1,150,000

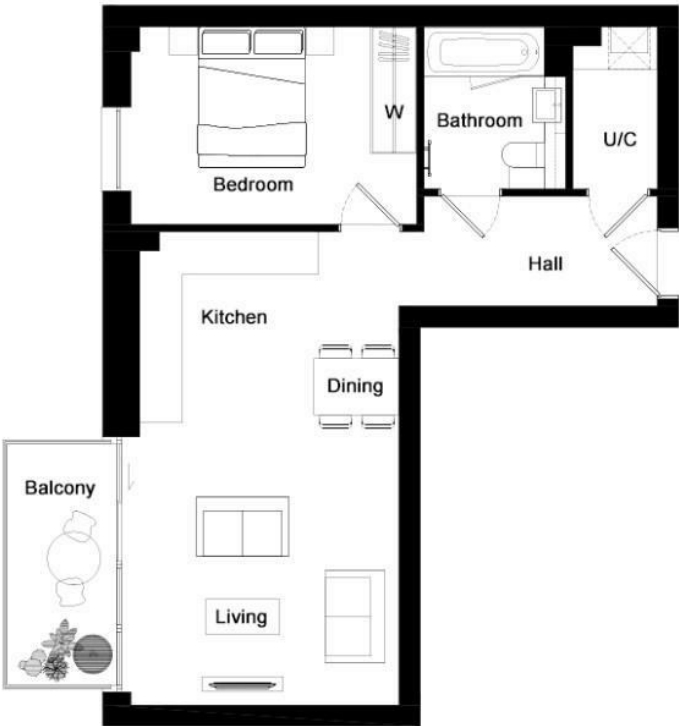


130 Old Street, London, EC1V 9BD

t: 020 7078 7938 ♦ e: info@finnerti.com ♦ finnerti.com

Floor Plan

KIDBROOKE
VILLAGE
ROYAL BOROUGH OF GREENWICH
SE3

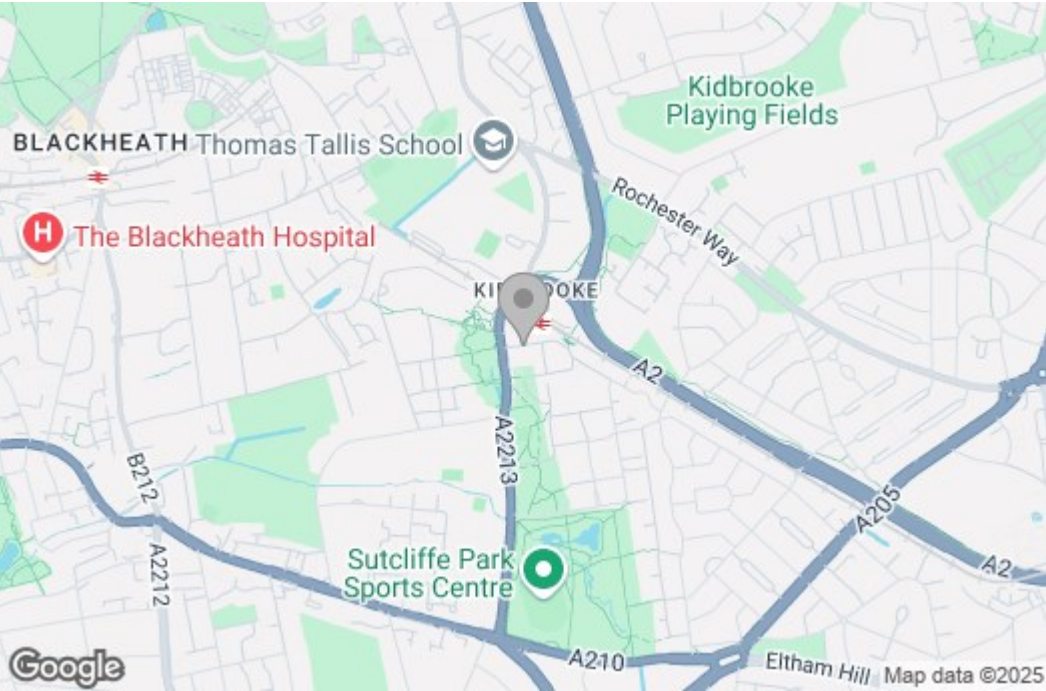


Kidbrooke Village, Centrum Court - Property D1-2-03, Second Floor

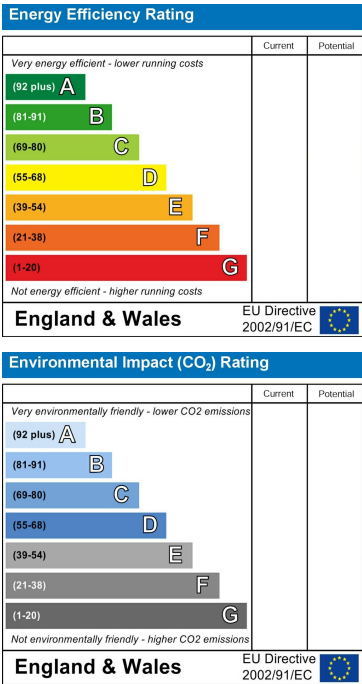
Dimensions		
Living/Dining/Kitchen	22' 0" x 12' 0"	6.70m x 3.66m
Bedroom	13' 3" x 9' 2"	4.04m x 2.80m
Balcony	11' 1" x 4' 11"	3.40m x 1.50m
Total Area	538 sq.ft	50 sq.m

Key	
U/C	Utility/Coats
W	Wardrobe

Area Map



Energy Efficiency Graph



These particulars, whilst believed to be accurate are set out as a general outline only for guidance and do not constitute any part of an offer or contract. Intending purchasers should not rely on them as statements of representation of fact, but must satisfy themselves by inspection or otherwise as to their accuracy. No person in this firm's employment has the authority to make or give any representation or warranty in respect of the property.

130 Old Street, London, EC1V 9BD

t: 020 7078 7938 ♦ e: info@finnerti.com ♦ finnerti.com